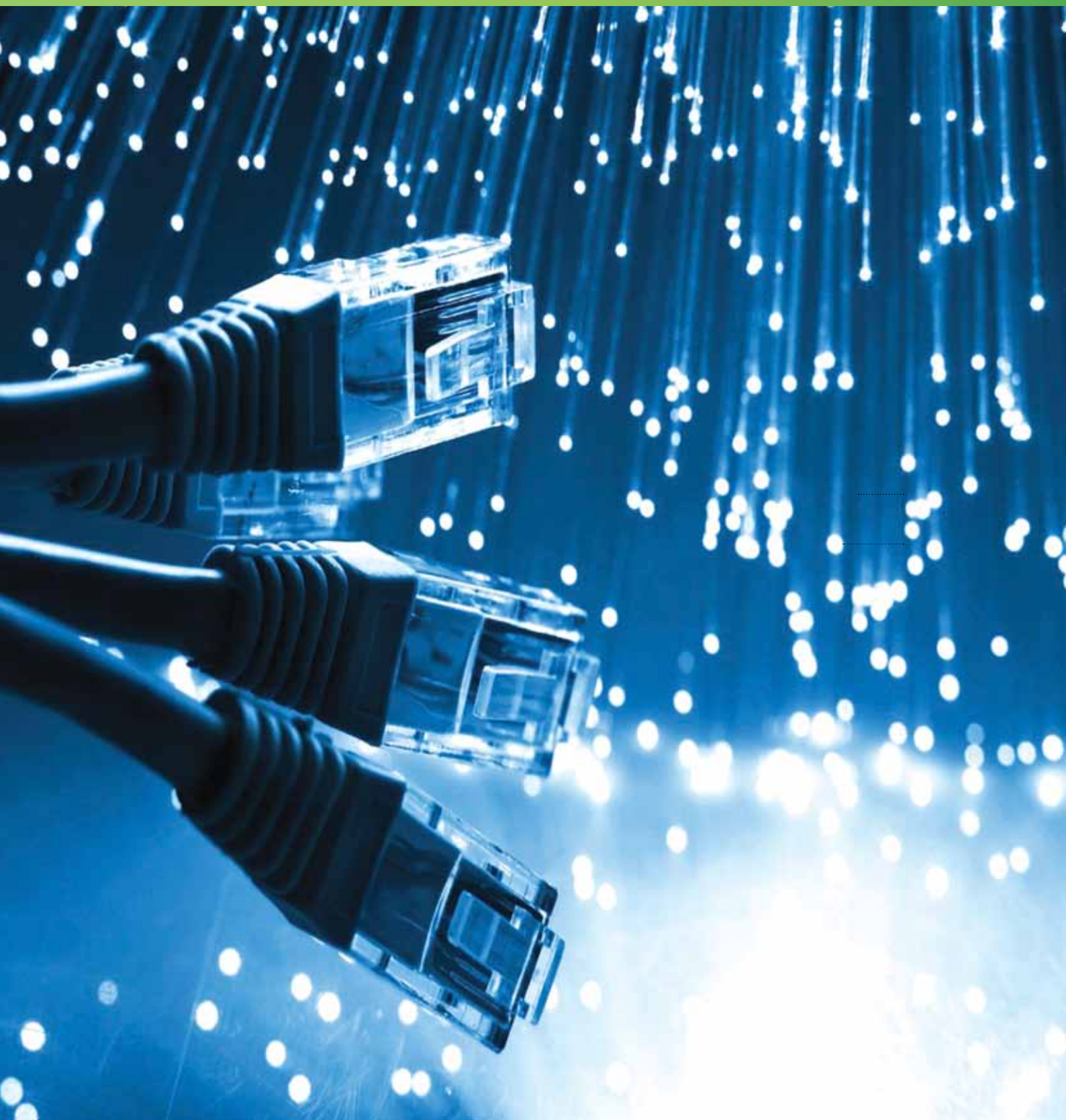


Mrežni / Optički / Koaksijalni kablovi / Net / Opt / Coax cables



Mrežni / Optički / Koaksijalni kablovi
Net / Opt / Coax cables

Bakarni kablovi

Simetrični plastikom i papirom i izolovani telekom kablovi, koaksijalni kablovi, diferencijalni zaštitni kablova, signalini i kontrolni kablovi, BALISE kablovi, instalacioni kablovi, železnički kablovi, univerzalni kablovi.

Optički kablovi

Unutrašnji i spoljnji kablovi sa single mode ili multimode vlaknima, samonoseći kablovi, fabrički pripremljeni kablovi, hibridni optički i bakarni kablovi, morski i jezerski kablovi.

Kablovi za prenos podataka

LAN kablovi (kat. 5, kat. 5e i kat 7+) Ethernet .

Copper cables

Symmetric plastic and paper insulated telecom cables, coaxial cables, differential protection cables, signaling and control cables, BALISE cables, installation cables, railway truck cables, universal cables.

Fiber optic cables

In and outdoor cables with single mode or multimode fibers, self-supporting aerial cables, pre-fabricated cords, fiber optic and copper hybrid cables, sea and lake cables.

DATA cables

Lan cables (cat. 5, cat. 5e and cat. 7+) Ethernet.

Dataline Cat.5



Primena: Za povezivanje jedinica IT sistema u desktop okruženju, između radnih stanica i kao vodeći kabl do 100 Mbit / s (Kategorija 5). On je u potpunosti u skladu sa zahtevima za elektromagnetnu kompatibilnost (EMC) evropskog standarda EN 55 022.

Application: For connection of IT system units in the desktop area, between workstations and as riser cable up to 100 Mbit/s (Category 5). It fully complies with the requirements to electromagnetic compatibility (EMC) of the European Standard EN 55 022.

Materijal provodnika:	bakar	Conductor material:	bare copper
Izolacija:	poliolefin	Insulation:	polyolefin
Raspored žila:	parice u slojevima	Stranding:	pairs in layers
Ekran:	plastikom presvučena Al-folija + odvodna bakarna žica punog preseka	Screen:	Plastic coated Al-foil + solid copper drain wire
Materijal plašta:	poliolefin	Sheathing material:	polyolefin
Radius savijanja tokom rada:	4 x DA	Bending radius, fixed installation:	4 x DA
Radius savijanja kretanje kabla u radu:	8 x DA	Bending radius, moved application:	8 x DA
Otpor:	100 Ohm	Impedance:	100 Ohm
Otpor izolacije:	10000 MOhm \times km	Insulation resistance:	10000 MOhm \times km
Faktor brzine:	0,66 v/c	Velocity factor:	0,66 v/c
Kategorija:	5	Category:	5
Radni kapacitet:	50 nF/km	Operating capacity:	50 nF/km
Obeležavanje žila:	boje po IEC 60708	Core identification:	colors acc. IEC 60708

Dataline Cat.5

Naziv kabla	Presek	Boja	Da	MKO	ES	CU	T
Cable name	Cross section	Color	mm	N	kWh/m	kg/km	kg/km
Dataline Cat.5 Flex FTP	4X2X AWG 26	siva / gray	5	150	0,29	13	27
Dataline Cat.5 FTP	4X2X AWG 24 FRNC	narandžasta / orange	6,6	220	0,76	19,2	44

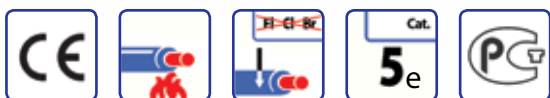
Objašnjenje oznaka

Da Spoljni dijametar
MKO Momenat kidanja prilikom poleganja
ES Energija sagorevanja
Cu Težina bakra u kabl
T Ukupna težina kabla

Labels explanation

Da Outer diameter
MKO Tensile strength (during installation)
ES Combustion energy
Cu Copper weight
T Total weight

Dataline Cat. 5e



Primena: Za povezivanje EDP sistemskih jedinica u okviru desktop okruženja (tercijalni opseg), kao i između spratnih razvodnika i desktopa po kategoriji 5e (poboljšanoj). Ona odgovara zahtevima EN 55022 i smernicama Evropske poštanske uprave o smetnjama (EMV). Pored toga kalajisana pletenica nudi glatku vezu sa zaštićenim konektorima.

Application: To the connection of EDP system units within the desktop area (Tertiary period range), as between floor distributors and desktop acc. to category 5e (enhanced). It corresponds to the requirements of the EN 55022 and the guidelines of the European postal administration regarding interferences (EMV). Additionally the tinned screen braid offers a smooth connection to screened data plugs.

Materijal provodnika:	bakar
Konstrukcija provodnika:	klasa 1
Izolacija:	umreženi poliolefin-kopolimer
Raspored žila:	parice u slojevima
Ekran:	aluminijumska folija + bakarna pletenica, kalajisana
Materijal plašta:	poliolefin-jedinjenje HM4, FRNC
Boja spoljnog plašta:	narandžasta RAL 2004
Otpornost na plamen:	VDE 0482-332-1-2/IEC 60332-1
Bez halogena:	DIN EN 50267/IEC 60754
Maksimalna temperatura tokom rada:	-20 - +60 °C
Radius savijanja tokom rada:	8 x DA
Radius savijanja, pomeranje tokom rada:	4 x DA
Otpor:	100 Ohm
Otpor izolacije:	5 MOhm x km
Faktor brzine:	0,74 v/c
Kategorija:	5e
Radni kapacitet:	50 nF/km
Otpor petlje:	170 Ohm/km
Ispitni naponski nivo:	0,7 kV
Obeležavanje žila:	boje po IEC 60708

Conductor material:	bare copper
Conductor construction:	solid, class 1
Insulation:	cross-linked polyolefin-copolymer
Stranding:	pairs in layers
Screen:	aluminum-foil + copper-braiding, tinned
Sheathing material:	polyolefin-compound HM4, FRNC
Colour of outer sheath:	orange RAL 2004
Flame retardant:	VDE 0482-332-1-2/IEC 60332-1
Halogen free:	DIN EN 50267/IEC 60754
Max. operating temperature, fixed:	-20 - +60 °C
Bending radius, fixed installation:	8 x DA
Bending radius, moved application:	4 x DA
Impedance:	100 Ohm
Insulation resistance:	5 MOhm x km
Velocity factor:	0,74 v/c
Category:	5e
Operating capacity:	50 nF/km
Loop resistance:	170 Ohm/km
Test voltage:	0,7 kV
Core identification:	colours acc. IEC 60708

f, MHz	slabljenje nominalna vred. dB/100 m	slabljenje tipična vrednost, dB/100 m	NEXT, dB, nominalna vred.	NEXT, dB, tipična vred.	ELFEXT, dB, 100 m tipična vred.	ACR, dB, tipična vred.	Povraćaj gubitka, dB, tipična vred.
f, MHz	attenuation nominal value, dB/100 m	attenuation, typical values, dB/100 m	NEXT, dB, nominal value	NEXT, dB, typical value	ELFEXT, dB/100 m, typical value	ACR, dB, typical value	Return Loss, dB, typical value
1	2,1	1,9	65,3	80	68	78,1	24
4	4,0	3,7	56,3	75	56	71,3	30
10	6,3	5,6	50,3	70	46	64,4	34
16	8,0	7,2	47,2	68	43	60,8	35
20	9,0	7,9	45,8	65	41	57,1	34

f, MHz	slabljenje nominalna vred. dB/100 m	slabljenje tipična vrednost, dB/100 m	NEXT, dB, nominalna vred.	NEXT, dB, tipična vred.	ELFEXT, dB, 100 m tipična vred.	ACR, dB, tipična vred.	Povraćaj gubitka, dB, tipična vred.
f, MHz	attenuation nominal value, dB/100 m	attenuation, typical values, dB/100 m	NEXT, dB, nominal value	NEXT, dB, typical value	ELFEXT, dB/100 m, typical value	ACR, dB, typical value	Return Loss, dB, typical value
31,25	11,4	10,3	42,9	60	36	49,7	33
62,5	16,5	14,4	38,4	56	32	41,6	31
100	21,3	18,2	35,3	50	26	31,8	28
155	-	19,9	-	45	24	25,1	26
200	-	24,2	-	42	22	17,8	24

Dataline Cat.5e

Naziv kabla	Presek	Boja	Da	SK	VK	MKO	ES	CU	T
Cable name	Cross section	Color	mm	mm	mm	N	kWh/m	kg/km	kg/km
Dataline Cat. 5e SFTP	4X2X AWG 24 FRNC	narandžasta / orange	6,6			250	0,7	29	54
Dataline Cat. 5e SFTP	2X4X2X AWG 24 FRNC	narandžasta / orange		13,4	6,6	500	1,4	58	108

Objašnjenje oznaka

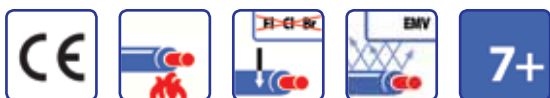
Da Spoljnji dijametar
SK Širina kabla
VK Visina kabla
MKO Momenat kidanja prilikom poleganja
ES Energija sagorevanja
Cu Težina bakra u kablu
T Ukupna težina kabla

Labels explanation

Da Outer diameter
SK Cable width
VK Cable height
MKO Tensile strength (during installation)
ES Combustion energy
Cu Copper weight
T Total weight

Dataline Cat. 7+

ELEKTROMETAL Dataline Cat. 7+



Primena: Za povezivanje jedinica informacionih sistema u desktop okruženju, između radnih stanica i kao vodeći kabl do 1000 Mbit/s (kategorija 7+). U potpunosti je u skladu sa zahtevima za elektromagnetnu kompatibilnost (EMC) evropskog standarda EN 55022. Dodatno bakarna pletenica obezbeđuje savršeno uklapanje sa zaštićenim konektorima.

Application: For connection of IT system units in the desktop area, between workstations and as riser cable up to 1000 Mbit/s (category 7+). It fully complies with the requirements to electromagnetic compatibility (EMC) of the European Standard EN 55022. Additional the copper braiding ensures perfect matching with screened connectors.

Materijal provodnika:	bakar
Izolacija:	pena-PE
Ekran preko pojedinačne žile:	folija
Ekran preko žila:	Cu-pletunica, kalajisana
Materijal plašta:	bezhalogeno jedinjenje HM2
Boja spoljnog plašta:	narandžasta RAL 2004
Otpornost na plamen:	VDE 0482-332-1-2/IEC 60332-1
Bez halogena:	DIN EN 50267/IEC 60754
Maksimalna temperatura tokom rada:	- 20 - +70 °C
Radius savijanja tokom rada:	4 x DA
Radius savijanja, tokom kretanja u radu:	8 x DA
Otpor:	100 Ohm
Faktor brzine:	0,74 v/c
Kategorija:	7+
Tip kabla:	Dataline Cat.7+ Dataline Cat.7+ duplex
Obeležavanje žila:	boje po IEC 60708 boje po IEC 60708

Conductor material:	bare copper
Insulation:	foam-PE
Screen over stranding unit:	foil
Screen over strand:	Cu-braid, tinned
Sheathing material:	FRNC-compound HM2
Colour of outer sheath:	orange RAL 2004
Flame retardant:	VDE 0482-332-1-2/IEC 60332-1
Halogen free:	DIN EN 50267/IEC 60754
Maximum operating temperature, fixed:	- 20 - +70 °C
Bending radius, fixed installation:	4 x DA
Bending radius, moved application:	8 x DA
Impedance:	100 Ohm
Velocity factor:	0,74 v/c
Category:	7+
Cable type:	Dataline Cat.7+ Dataline Cat.7+ duplex
Core identification:	colours acc. IEC 60708 colours acc. IEC 60708

f, MHz	slabljenje nominalna vred. dB/100 m	slabljenje tipična vrednost, dB/100 m	NEXT, dB, nominalna vred.	NEXT, dB, tipična vred.	PS-NEXT, dB, tipična vred.	ELFEXT, dB, 100 m tipična vred.	PS ELFEXT, dB, 100 m tipična vred.	PS-ACR, dB, tipična vred.	Povraćaj gubitka, dB, tipična vred.
f, MHz	attenuation nominal value, dB/100 m	attenuation, typical value, dB/100 m	NEXT, dB, nominal value	NEXT, dB, typical value	PS-NEXT, dB, typical value	ELFEXT, dB/100 m, typical value	PS ELFEXT, dB/100m, typical value	PS-ACR, dB, typical value	Return Loss, dB, typical value
1	2	1,9	80	100	97	90	87	95,1	27
10	5,7	5,5	80	100	97	90	87	95,1	30
16	7,2	6,9	80	100	97	86,7	83,7	90	30
20	8,1	7,8	80	100	97	84,8	81,8	89,2	30
100	18,8	18	72	94	91,3	70,8	67,8	73,3	25,1
155	23,4	22,7	70	91	87,9	67	64	65,1	23,8
300	33,3	32,5	65	85	82,7	61,3	58,3	50,3	21,8
600	48,9	47,6	61	80	77,3	55,2	52,2	29,6	19,7

f, MHz	slabljenje nominalna vred. dB/100 m	slabljenje tipična vrednost, dB/100 m	NEXT, dB, nominalna vred.	NEXT, dB, tipična vred.	PS-NEXT, dB, tipična vred.	ELFEXT, dB, 100 m tipična vred.	PS ELFEXT, dB, 100 m tipična vred.	PS-ACR, dB, tipična vred.	Povraćaj gubitka, dB, tipična vred.
f, MHz	attenuation nominal value, dB/100 m	attenuation, typical value, dB/100 m	NEXT, dB, nominal value	NEXT, dB, typical value	PS-NEXT, dB, typical value	ELFEXT, dB/100 m, typical value	PS ELFEXT, dB/100m, typical value	PS-ACR, dB, typical value	Return Loss, dB, typical value
900	-	60,0	-	77	74,1	51,7	48,7	14,1	18,4
1000	-	63,8	-	76	73,3	50,8	47,8	9,5	18,1

Dataline Cat. 7

Naziv kabla	Presek	Boja	Da	MKO	ES	CU	T
Cable name	Cross section	Color	mm	N	kWh/m	kg/km	kg/km
Dataline Cat. 7+ STP	4X2X AWG 23 PiMF FRNC	narandž. / orange	7,5	98	0,19	32	65
Dataline Cat. 7+ STP	4X2X AWG 23 PiMF FRNC kutija / box 200 m	narandž. / orange	7,5	98	0,19	32	65
Dataline Cat. 7+ STP	4X2X AWG 23 PiMF FRNC namotaj / ring 100 m	narandž. / orange	7,5	98	0,19	32	65

Dataline Cat. 7 duplex

Naziv kabla	Presek	Boja	Da	SK	VK	MKO	ES	CU	T
Cable name	Cross section	Color	mm	mm	mm	N	kWh/m	kg/km	kg/km
Dataline Cat. 7+ Duplex	STP 2X4X2X AWG 23 PiMF FRNC	narandž. / orange	15	15,2	7,5	196	0,39	64	130
Dataline Cat. 7+ Duplex	STP 2X4X2X AWG 23 PiMF FRNC namotaj / ring 100 m	narandž. / orange	15	15,2	7,5	196	0,39	64	130

Objašnjenje oznaka

Da	Spoljni dijаметar
SK	Širina kabla
VK	Visina kabla
MKO	Momenat kidanja prilikom poleganja
ES	Energija sagorevanja
Cu	Težina bakra u kablu
T	Ukupna težina kabla

Labels explanation

Da	Outer diameter
SK	Cable width
VK	Cable height
MKO	Tensile strength (during installation)
ES	Combustion energy
Cu	Copper weight
T	Total weight

Optical Dataline I-V(ZN)H



Primena: Zatvoreni distributivni kabl sa čvrstim ublaživačem i bezhalogenim omotačem. Za montažu na nosače kablova i u vodovima. Kabl nudi do 24 vlakna, koja se mogu direktno spojiti sa konektorima i pogodni su za montažu na terenu.

Application: Indoor distribution cable with tight buffers and LSOH jacket. For installation on cable trays and ducts. The cable offers up to 24 fibers, which may be directly assembled to connectors and are suitable for field-assembly.

Kvalitet vlakana:	vidi stranicu za vlakna
Element:	čvrst ublaživač
Bez metala:	da
Materijal plašta:	bezhalogeno jedinjenje HM1
Otpornost na plamen:	VDE 0482-332-1-2/IEC 60332-1
Maksimalna temperatura tokom rada:	-20 - 60 °C
Dozvoljena temperatura tokom poleganja:	-20 - 60 °C

Fiber quality:	see data-sheet for fibers
Element:	tight buffer
Metal free:	yes
Sheathing material:	FRNC-compound HM1
Flame retardant:	VDE 0482-332-1-2/IEC 60332-1
Max. operating temperature, fixed:	-20 - 60 °C
Temperature, moved /during installation:	-20 - 60 °C

Optical Dataline I-V(ZN)H

Naziv kabla	Presek	Boja	Da	SK	VK	MKO	ZČP	ES	T	RSZ	RSbZ	OG
Cabl name	Crosssection	Color	mm	mm	mm	N	N	kWh/m	kg/km	mm	mm	N
I-V(ZN)H	2X1G50/125 Standard	narandž. / orange	6	10	6	450	250	0,11	19,3	40	40	200
I-V(ZN)H	2X1G50/125 High Grade	narandž. / orange	6	10	6	450	250	0,11	19	40	40	200
I-V(ZN)H	2X1G62,5/125 Standard	narandž. / orange	6	10	6	450	250	0,11	19,3	40	40	200
I-V(ZN)H	1X4G50/125 Standard	narandž. / orange	5,1			1500	1000	0,11	32	75	51	200
I-V(ZN)H	1X4G50/125 High Grade	narandž. / orange	5,1			1500	1000	0,11	32	75	51	200
I-V(ZN)H	1X4G62,5/125 Standard	narandž. / orange	5,1			1500	1000	0,11	32	75	51	200
I-V(ZN)H	1X6G50/125 Standard	narandž. / orange	5,5			1500	1000	0,14	36	85	57	200
I-V(ZN)H	1X6G62,5/125 Standard	narandž. / orange	5,5			1500	1000	0,14	36	85	57	200
I-V(ZN)H	1X8G50/125 Standard	narandž. / orange	5,7			1500	1000	0,14	36	85	57	200
I-V(ZN)H	1X8G62,5/125 Standard	narandž. / orange	5,7			1500	1000	0,14	36	85	57	200
I-V(ZN)H	1X10G50/125 Standard	narandž. / orange	6,5			1500	1000	0,18	41	100	65	200
I-V(ZN)H	1X10G62,5/125 Standard	narandž. / orange	6,5			1500	1000	0,18	41	100	65	200
I-V(ZN)H	1X12G50/125 Standard	narandž. / orange	6,5			1500	1000	0,18	41	100	65	200
I-V(ZN)H	1X12G62,5/125 Standard	narandž. / orange	6,5			1500	1000	0,18	41	100	65	200

Objašnjenje oznaka

Da	Spoljni dijametar
SK	Širina kabla
VK	Visina kabla
MKO	Momenat kidanja prilikom poleganja
ZČP	Zatezna čvrstoća(permanentno)
ES	Energija sagorevanja
T	Ukupna težina kabla
RSZ	Radijus savijanja sa opterećenjem zatezanja
RSbZ	Radijus savijanja bez opterećenja zatezanja
OG	Otpor gnječenja

Labels explanation

Da	Outer diameter
SK	Cable width
VK	Cable height
MKO	Tensile strength (during installation)
ZČP	Tensile strength (permanent)
ES	Combustion energy
T	Total weight
RSZ	Bending radius with tension load
RSbZ	Bending radius without tension load
OG	Crush resistance



Optical Dataline I-D(ZN)H



Primena: Optički kabl za unutrašnju upotrebu sa više vlakana i spoljašnjim plaštom bez halogena. Za instalaciju unutar objekata na nosačima i u kablovskim kanalima. Kabl mora biti završen kablovskim terminatorom ili u kablovskom spliteru, direktna montaža fiber-konektora nije moguća.

Application: Optical indoor cable with central multi fiber loose buffer and halogen-free outer sheath. For installation inside of buildings on cable trays and in cable ducts. The cable must be terminated with a cable termination in a cable splitter, direct mounting of fiber-connectors is not possible.

Kvalitet vlakana:	vidi stranicu za vlakna
Element:	ispunjena široka cev
Bez metala:	da
Materijal plašta:	bezhalogeno jedinjenje HM1
Otpornost na plamen:	VDE 0482-332-1-2/IEC 60332-1
Bez halogena:	DIN EN 50267/IEC 60754
Maksimalna temperatura tokom rada:	-20 - 60 °C
Dozvoljena temperatura tokom poleganja:	-20 - 60 °C

Fiber quality:	see data-sheet for fibers
Element:	filled loose tube
Metal free:	yes
Sheathing material:	FRNC-compound HM1
Flame retardant:	VDE 0482-332-1-2/IEC 60332-1
Halogen free:	DIN EN 50267/IEC 60754
Max. operating temperature, fixed:	-20 - 60 °C
Temperature, moved/during installation:	-20 - 60 °C

Optical Dataline I-D(ZN)H

Naziv kabela	Presek	Boja	Da	MKO	ZČP	ES	T	RSZ	RSbZ	OG
Cable name	Cross section	Color	mm	N	N	kWh/m	kg/km	mm	mm	N
I-D(ZN)H	1X4G50/125 Standard	narandž. / orange	6	1000	800	0,1	33	140	130	200
I-D(ZN)H	1X4G50/125 High Grade	narandž. / orange	6	1000	800	0,1	33	140	130	200
I-D(ZN)H	1X4G62,5/125 Standard	narandž. / orange	6	1000	800	0,1	33	140	130	200
I-D(ZN)H	1X8G50/125 Standard	narandž. / orange	6	1000	800	0,1	33	140	130	200
I-D(ZN)H	1X8G50/125 High Grade	narandž. / orange	6	1000	800	0,1	33	140	130	200
I-D(ZN)H	1X8G62,5/125 Standard	narandž. / orange	6	1000	800	0,1	33	140	130	200
I-D(ZN)H	1X12G50/125 Standard	narandž. / orange	6	1000	800	0,1	33	140	130	200
I-D(ZN)H	1X12G50/125 High Grade	narandž. / orange	6	1000	800	0,1	33	140	130	200
I-D(ZN)H	1X12G62,5/125 Standard	narandž. / orange	6	1000	800	0,1	33	140	130	200
I-D(ZN)H	1X24G50/125 Standard	narandž. / orange	10	1000	800	0,13	35	150	140	200
I-D(ZN)H	1X24G50/125 High Grade	narandž. / orange	10	1000	800	0,13	35	140	130	200

Objašnjenje oznaka

Da Spoljni dijametar
MKO Momenat kidanja prilikom poleganja
ZČP Zatezna čvrstoća(permanentno)
ES Energija sagorevanja
T Ukupna težina kabela
RSZ Radijus savijanja sa opterećenjem zatezanja
RSbZ Radijus savijanja bez opterećenja zatezanja
OG Otpor gnječenja

Labels explanation

Da Outer diameter
MKO Tensile strength (during installation)
ZČP Tensile strength (permanent)
ES Combustion energy
T Total weight
RSZ Bending radius with tension load
RSbZ Bending radius without tension load
OG Crush resistance

Optical Dataline A-DQ(ZN)B2Y



Primena: Optičkog kabla sa centralnom cevi sa nemetalnim oklopom i zaštitom od glodara. Bubreći element unutar žile obezbeđuje uzdužnu vodonepropusnost kabla. Hrapav i otporan na habanje PE plašt omogućava jednostavnu instalaciju u cevima i kanalima. Plašt je bez halogena, ali nije otporan na plamen.

Application: Fiber optical cable with central tube with non-metallic armor and rodent protection. Swelling elements within the strand ensure longitudinally water tightness of the cable. The rugged and abrasion-resistant PE-sheath enables easy installation in tubes and ducts. The sheath is halogen-free, but not flame retardant.

Kvalitet vlakana:	vidi stranicu za vlakna
Element:	ispunjena široka cev
Bez metala:	da
Oklop:	stakleno predivo
Materijal plašta:	polietilen
Boja spoljnog plašta:	crna
Obeleževanje metraže:	da
Otpornost na plamen:	ne
UV-otpornost:	da
Maksimalna temperatura tokom rada:	-20 - +70 °C
Dozvoljena temperatura tokom poleganja:	0 - +50 °C

Fiber quality:	see data-sheet for fibers
Element:	filled loose tube
Metal free:	yes
Aarmor:	glass yarns
Sheathing material:	polyethylene
Color of outer sheath:	black
Meter mark:	yes
Flame retardant:	no
UV-resistant:	yes
Max. operating temperature, fixed:	-20 - +70 °C
Temperature, moved/during installation:	0 - +50 °C

Optical Dataline A-DQ(ZN)B2Y (Z) 2,2kN

Naziv kabla	Presek	Boja	Da	MKO	T	RSZ	RSbZ	OG
Cable name	Cross section	Color	mm	N	kg/km	mm	mm	N
A-DQ(ZN)B2Y (Z)	1X4G50/125 Standard	crna / black	8,4	2200	64	160	140	200
A-DQ(ZN)B2Y (Z)	1X6G50/125 Standard	crna / black	8,4	2200	64	160	140	200
A-DQ(ZN)B2Y (Z)	1X8G50/125 Standard	crna / black	8,4	2200	64			200
A-DQ(ZN)B2Y (Z)	1X12G50/125 Standard	crna / black	8,4	2200	64	160	140	200
A-DQ(ZN)B2Y (Z)	1X16G50/125 Standard	crna / black	8,4	2200	64	160	140	200
A-DQ(ZN)B2Y (Z)	1X24G50/125 Standard	crna / black	8,4	2200	74	160	140	200
A-DQ(ZN)B2Y (Z)	1X4G62,5/125 Standard	crna / black	8,4	2200	64	160	140	200
A-DQ(ZN)B2Y (Z)	1X6G62,5/125 Standard	crna / black	8,4	2200	64	160	140	200
A-DQ(ZN)B2Y (Z)	1X8G62,5/125 Standard	crna / black	8,4	2200	64	160	140	200
A-DQ(ZN)B2Y (Z)	1X12G62,5/125 Standar	crna / black	8,4	2200	64	160	140	200
A-DQ(ZN)B2Y (Z)	1X16G62,5/125 Standard	crna / black	8,4	2200	64	160	140	200
A-DQ(ZN)B2Y (Z)	1X24G62,5/125 Standard	crna / black	8,4	2200	74	160	140	200
A-DQ(ZN)B2Y (Z)	1X4G50/125 High Grade	crna / black	8,4	2200	64	160	140	200
A-DQ(ZN)B2Y (Z)	1X6G50/125 High Grade	crna / black	8,4	2200	64	160	140	200
A-DQ(ZN)B2Y (Z)	1X8G50/125 High Grade	crna / black	8,4	2200	64	160	140	200
A-DQ(ZN)B2Y (Z)	1X12G50/125 High Grade	crna / black	8,4	2200	64	160	140	200
A-DQ(ZN)B2Y (Z)	1X16G50/125 High Grade	crna / black	8,4	2200	64	160	140	200

Naziv kabla	Presek	Boja	Da	MKO	T	RSZ	RSbZ	OG
Cable name	Cross section	Color	mm	N	kg/km	mm	mm	N
A-DQ(ZN)B2Y (Z)	1X24G50/125 High Grade	crna / black	8,4	2200	74	160	140	200

Optical Dataline A-DQ(ZN)B2Y (V)

Naziv kabla	Presek	Boja	Da	MKO	ZČP	ES	T	RSZ	RSbZ	OG
Cable Name	Cross section	Color	mm	N	N	kWh/m	kg/km	mm	mm	N
A-DQ(ZN)B2Y	3X12G50/125 Standard	crna / black	11,5	3200	2000	3,6	107	250	180	300
A-DQ(ZN)B2Y	4X12G50/125 Standard	crna / black	11,5	3200	2000	3,6	107	250	180	300
A-DQ(ZN)B2Y	3X12G62,5/125 Standard	crna / black	11,5	3200	2000	3,6	107	250	180	300
A-DQ(ZN)B2Y	3X12G50/125 High Grade	crna / black	11,5	3200	2000	3,6	107	250	180	300
A-DQ(ZN)B2Y	4X12G62,5/125 Standard	crna / black	11,5	3200	2000	3,6	107	250	180	300
A-DQ(ZN)B2Y	4X12G50/125 High Grade	crna / black	11,5	3200	2000	3,6	107	250	180	300
A-DQ(ZN)B2Y	2X12E9/125	crna / black	11	3200	2000	3,6	107	250	180	300
A-DQ(ZN)B2Y	4X12E9/125	crna / black	11,5	3200	2000	3,6	107	250	180	300
A-DQ(ZN)B2Y	8X12E9/125	crna / black	13	4900	3100	3,4	125			300
A-DQ(ZN)B2Y	12X12E9/125	crna / black	15,5	5900	3700	4,6	185			300

Optical Dataline A-DQ(ZN)B2Y plus

Naziv kabla	Presek	Boja	Da	MKO	ZČP	T	OG
Cable Name	Cross section	Color	mm	N	N	kg/km	N
A-DQ(ZN)B2Y plus	1X4E9/125	crna / black	9	3000	2100	64	200
A-DQ(ZN)B2Y plus	1X4E9/125	crna / black	9	3000	2100	64	200
A-DQ(ZN)B2Y plus	1X4E9/125	crna / black	9	3000	2100	64	200
A-DQ(ZN)B2Y plus	1X4E9/125	crna / black	9	3000	2100	64	200

Objašnjenje oznaka

Da Spoljni dijametar
MKO Momenat kidanja prilikom poleganja
ZČP Zatezna čvrstoća (permanentno)
ES Energija sagorevanja
T Ukupna težina kabla
RSZ Radijus savijanja sa opterećenjem zatezanja
RSbZ Radijus savijanja bez opterećenja zatezanja
OG Otpor gnječenja

Labels explanation

Da Outer diameter
MKO Tensile strength (during installation)
ZČP Tensile strength (permanent)
ES Combustion energy
T Total weight
RSZ Bending radius with tension load
RSbZ Bending radius without tension load
OG Crush resistance

Optical Dataline U-DQ(ZN)BH



Primena: Bezhalogeni optički kabl sa širokom centralnom cevi i ojačanjem od staklenog prediva. Za fiksnu instalaciju u zatvorenom i otvorenom prostoru, kao i za direktno poleganje u zemlju. Kabl je stoga optimalno pogodan za vezu između zgrada.

Application: LSOH optical cable with central loose tube and glass yarn strength members. For fixed installation indoors and outdoors, as well as for direct burial. The cable is therefore optimally suitable for connection between buildings.

Element:	popunjena široka cev
Za spoljnu upotrebu:	da
Otpornost na plamen:	po IEC 60332-1-2
Bez metala:	da
Materijal plašta:	poliolefin
Bez halogena po EN 50267-2-2:	da
Radius savijanja sa opterećenjem zatezanja:	150 mm
Radius savijanja bez opterećenja zatezanjem:	140 mm
Maksimalna temperatura tokom rada:	-20 - +70 °C
Maksimalna temperatura tokom postavljanja:	-5 - +50 °C

Element:	filled loose tube
For outdoor use:	yes
Flame retardant:	acc. to IEC 60332-1-2
Metal free:	yes
Sheathing material:	polyolefin
Halogenfree acc. to EN 50267-2-2:	yes
Bending radius with tension load:	150 mm
Bending radius without tension load:	140 mm
Maximum operating temperature, fixed:	-20 - +70 °C
Maximum operating temperature, moved:	-5 - +50 °C

Optical Dataline U-DQ(ZN)BH

	2-16 vlakana	24 vlakana		2-16 fibers	24 fibers
Boja spoljnog plašta	crna	crna	Colour of outer sheath:	black	black
Otpornost na gnječenje:	2000 N	2000 N	Crush resistance:	2000 N	2000 N
Zatezna čvrstoća tokom instalacije:	1250 N	1250 N	Tensile strength during installation:	1250 N	1250 N
Spoljni dijametar:	6,4 mm	7,5 mm	Outer diameter:	6,4 mm	7,5 mm
Težina:	48 kg	62 kg	Weight:	48 kg	62 kg
Energija sagorevanja:	94 kWh/m	142 kWh/m	Combustion energy:	94 kWh/m	142 kWh/m

RG-6/U-4 Cu/Cu-HFFR

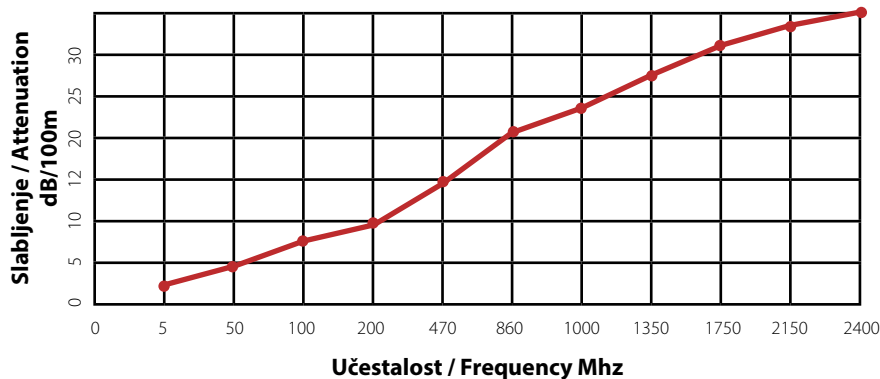


Primena: Koristi se kao priključni kabl u KDS-CCTV sistemima u zatvorenom prostoru i satelitskim sistemima za koje se traži nisko slabljenje. Ovi kablovi se zbog svojih vatrootpornih svojstava i svoje strukture koriste na prometnim mestima (tržnim centrima, hotelima itd.), gde zdravlje ljudi ne sme biti ugroženo dimom i korozivnih gasova koji proističu od požara.

Application: It is used as a connection cable at indoor catv-cctv systems and satellite systems for which low attenuation is demanded. These cables with flame retardant characteristics due to their structures are used at crowded places (shopping malls, hotels etc.), where human health must not be endangered by smoke and corrosive gases resulting from fires.

Provodnik:	1,0 mm Ø bakar punog preseka
Izolacija:	4,60 Ø PE pena
1. Ekran:	PE folija presvučena aluminijumom (100 % pokrivenosti)
2. Ekran:	Kalajisano bakarno pletivo (60 % pokrivenosti)
Pláš:	6,8 Ø PVC jedinjenje- crno/zeleno
Otpor izolacije (MAX):	>2000 M km
Radni kapacitet (MAX):	53 pF/m
Brzina širenja:	82%
Radni napon:	1,3 kV
Ispitni naponski nivo:	3,0 kV
Radius savijanja:	20x D mm
Temperaturni opseg:	-40°C+70°C
Otpor:	75±3 Ω
Test zapaljivosti:	IEC 60332-1-2/VDE 0482-332-1-2 EN 60332-1-2
Gustina dima:	IEC 61034-2/VDE 0482-1034-2 EN 61034-2
Test na korozivnost sagorelih gasova:	IEC 60754-2/VDE 0482-267-3 EN 50267-2-3

Conductor:	1,0 mm Ø electrolytic solid copper
Insulation:	4,60 Ø physical foam PE
1. Screen:	Al-pes tape shielded (100 % coverage)
2. Screen:	Tinned copper braid (60 % coverage)
Sheath:	6,8 Ø PVC compound- black/green
Insulation resistance (max):	>2000 M km
Mutual capacitance (max):	53 pF/m
Velocity of propagation:	82%
Operating voltage:	1,3 kV
Test voltage:	3,0 kV
Bending radius:	20X D mm
Temperature range:	-40°C+70°C
Impedance:	75±3 Ω
Flame test:	IEC 60332-1-2/VDE 0482-332-1-2 EN 60332-1-2
Smoke density:	IEC 61034-2/VDE 0482-1034-2 EN 61034-2
Test on corrosiveness of combustion gases:	IEC 60754-2/VDE 0482-267-3 EN 50267-2-3



Slabljenje / Attenuation		
5 Mhz:	2	dB/100 m
50 Mhz:	4.9	dB/100 m
100 Mhz:	7	dB/100 m
200 Mhz:	9.8	dB/100 m
470 Mhz:	14.7	dB/100 m
860 Mhz:	20.9	dB/100 m
1000 Mhz:	23.5	dB/100 m
1350 Mhz:	27.6	dB/100 m
1750 Mhz:	32	dB/100 m
2150 Mhz:	35.7	dB/100 m
2400 Mhz:	38.2	dB/100 m

RG-6/U-6 Cu/Cu-HFFR

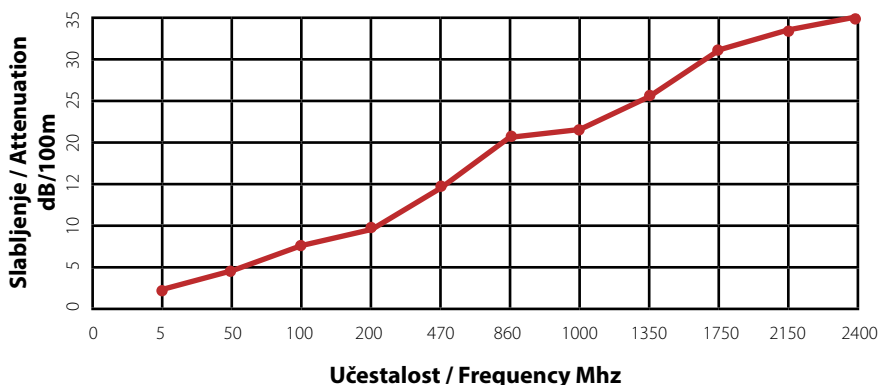


Primena: Koristi se kao priključni kabl u KDS-CCTV sistemima u zatvorenom prostoru i satelitskim sistemima za koje se traži nisko slabljenje. Ovi kablovi se zbog svojih vatrootpornih svojstava i svoje strukture koriste na prometnim mestima (tržnim centrima, hotelima itd.), gde zdravlje ljudi ne sme biti ugroženo dimom i korozivnih gasova koji proističu od požara.

Application: It is used as a connection cable at indoor catv-cctv systems and satellite systems for which low attenuation is demanded. These cables with flame retardant characteristics due to their structures are used at crowded places (shopping malls, hotels etc.), where human health must not be endangered by smoke and corrosive gases resulting from fires.

Provodnik:	1,0 mm Ø bakar punog preseka
Izolacija:	4,60 Ø PE pena
1. Ekran:	PE folija presvučena bakrom (100 % pokrivenosti)
2. Ekran:	Kalajisano bakarno pletivo (60 % pokrivenosti)
Plast:	6,8 Ø HFFR jedinjenje- crno/sivo
Otpor izolacije (MAX):	>2000 M km
Radni kapacitet (MAX):	53 pF/m
Brzina širenja:	82%
Radni napon:	1,3 kV
Ispitni naponski nivo:	3,0 kV
Radius savijanja:	20x D mm
Temperaturni opseg:	-40°C+70°C
Otpor:	75±3 Ω
Test zapaljivosti:	IEC 60332-1-2/VDE 0482-332-1-2 EN 60332-1-2
Gustina dima:	IEC 61034-2/VDE 0482-1034-2 EN 61034-2
Test na korozivnost sagorelih gasova:	IEC 60754-2/VDE 0482-267-3 EN 50267-2-3

Conductor:	1,0 mm Ø electrolytic solid copper
Insulation:	4,60 Ø physical foam PE
1. Screen:	Cu-pes tape shielded (100 % coverage)
2. Screen:	Tinned copper braid (60 % coverage)
Sheath:	6,8 Ø HFFR compound- black/grey
Insulation resistance (max):	>2000 M km
Mutual capacitance (max):	53 pF/m
Velocity of propagation:	82%
Operating voltage:	1,3 kV
Test voltage:	3,0 kV
Bending radius:	20X D mm
Temperature range:	-40°C+70°C
Impedance:	75±3 Ω
Flame test:	IEC 60332-1-2/VDE 0482-332-1-2 EN 60332-1-2
Smoke density:	IEC 61034-2/VDE 0482-1034-2 EN 61034-2
Test on corrosiveness of combustion gases:	IEC 60754-2/VDE 0482-267-3 EN 50267-2-3



Slabljenje 20°C / Attenuation 20°C

5 Mhz:	1,5	dB/100 m
50 Mhz:	4,1	dB/100 m
100 Mhz:	6,6	dB/100 m
200 Mhz:	9,2	dB/100 m
470 Mhz:	14,6	dB/100 m
860 Mhz:	20,3	dB/100 m
1000 Mhz:	21,8	dB/100 m
1350 Mhz:	25,4	dB/100 m
1750 Mhz:	28	dB/100 m
2150 Mhz:	31,4	dB/100 m
2400 Mhz:	34	dB/100 m

RG-11/U-4 Cu/Cu-HFFR

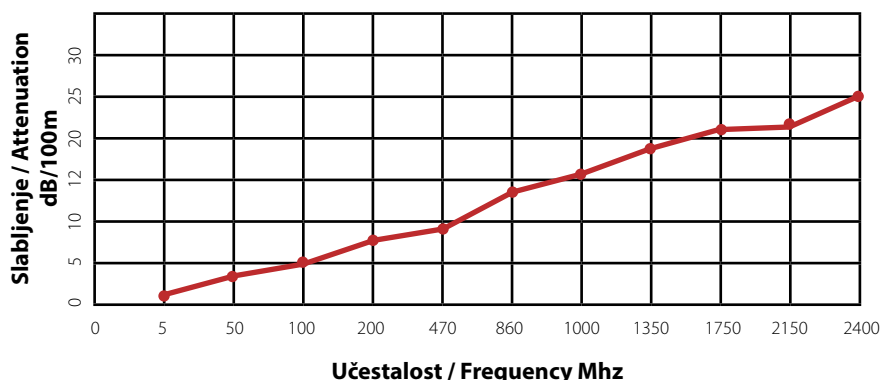


Primena: Koristi se kao priključni kabl za KDS-CCTV sistemima u zatvorenom prostoru i satelitskih sistema za koje se traži nisko slabljenje. Ovi kablovi se zbog svojih vatrootpornih svojstava i svoje strukture koriste na prometnim mestima (tržnim centrima, hotelima itd.), gde zdravlje ljudi ne sme biti ugroženo dimom i korozivnih gasova koji proističu od požara.

Application: It is used as a connection cable at indoor catv-cctv systems and satellite systems for which low attenuation is demanded. These cables with flame retardant characteristics due to their structures are used at crowded places (shopping malls, hotels etc.), where human health must not be endangered by smoke and corrosive gases resulting from fires.

Provodnik:	1.63 mm Ø bakar punog preseka
Izolacija:	7.20 Ø PE pena
1. Ekran:	PE folija presvučena aluminijumom (100 % pokrivenosti)
2. Ekran:	kalajisano bakarno pletivo (60 % pokrivenosti)
Plast:	10,30 Ø HFFR jedinjenje crno ili sivo
Otpor izolacije (MAX):	>2000 MΩkm
Radni kapacitet (MAX):	53 pF/m
Brzina širenja:	82 %
Radni napon:	2.0 kV
Ispitni naponski nivo:	5.0 kV
Radius savijanja:	20x D mm
Temperaturni opseg:	-40°C +70°C
Otpor:	75±3Ω
Test zapaljivosti:	IEC 60332-1-2/VDE 0482-332-1-2 EN 60332-1-2
Gustina dima:	IEC 61034-2/VDE 0482-1034-2 EN 61034-2
Test na korozivnost sagorelih gasova:	IEC 60754-2/VDE 0482-267-3 EN 50267-2-3

Conductor:	1.63 mm Ø electrolytic solid copper
Insulation:	7.20 Ø physical foam PE
1.Screen:	AL-pase tape shielded (100 % coverage)
2.Screen:	Tinned copper braid (60 % COVERAGE)
Sheath:	10,30 Ø HFFR compound black or gray
Insulation resistance (max):	>2000 MΩkm
Mutual capacitance (max):	53 pF/m
Velocity of propagation:	82 %
Operating voltage:	2.0 kV
Test voltage:	5.0 kV
Bending radius:	20x D mm
Temperature range: :	-40°C +70°C
Impedance:	75±3Ω
Flame test:	IEC 60332-1-2/VDE 0482-332-1-2 EN 60332-1-2
Smoke density:	IEC 61034-2/VDE 0482-1034-2 EN 61034-2
Test on corrosiveness of combustion gases:	IEC 60754-2/VDE 0482-267-3 EN 50267-2-3



Slabjenje 20°C / Attenuation 20°C

5 Mhz :	1.1	dB/100 m
50 Mhz :	2.8	dB/100 m
100 Mhz :	4.5	dB/100 m
200 Mhz :	6.4	dB/100 m
470 Mhz :	8.9	dB/100 m
860 Mhz :	13.7	dB/100 m
1000 Mhz :	14.7	dB/100 m
1350 Mhz :	17.7	dB/100 m
1750 Mhz :	20.1	dB/100 m
2150 Mhz :	22.2	dB/100 m
2400 Mhz :	24	dB/100 m

RG-11/U-6 Cu/Cu-HFFR

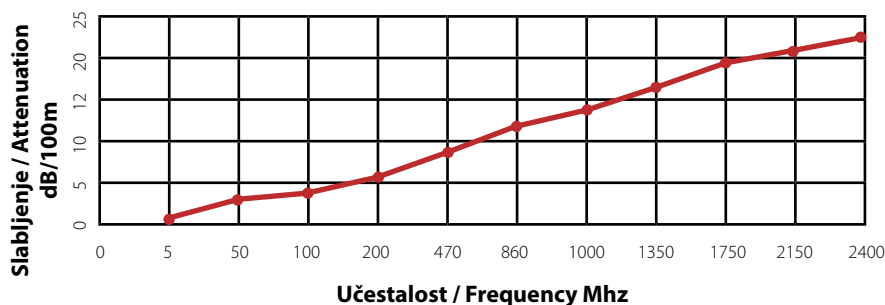


Primena: Koristi se kao priključni kabl u KDS-CCTV sistemima u zatvorenom prostoru i satelitskim sistemima za koje se traži nisko slabljenje. Ovi kablovi se zbog svojih vatrootpornih svojstava i svoje strukture koriste na prometnim mestima (tržnim centrima, hotelima itd.), gde zdravlje ljudi ne sme biti ugroženo dimom i korozivnih gasova koji proističu od požara.

Application: It is used as a connection cable at indoor catv-cctv systems and satellite systems for which low attenuation is demanded. These cables with flame retardant characteristics due to their structures are used at crowded places (shopping malls, hotels etc.), where human health must not be endangered by smoke and corrosive gases resulting from fires.

Provodnik:	1,63 mm ø bakar punog preseka
Izolacija:	7,20 Ø PE pena
1. Ekran:	PE folija presvučena bakrom (100 % pokrivenosti)
2. Ekran:	Kalajisano bakarno pletivo (60 % pokrivenosti)
Plajt:	10,50 Ø HFFR jedinjenje- crno ili sivo
Otpor izolacije (MAX):	>2000 M km
Radni kapacitet (MAX):	53 pF/m
Brzina širenja:	82%
Radni napon:	1,1 kV
Ispitni naponski nivo:	2,5 kV
Radijus savijanja:	15x D mm
Temperaturni opseg:	-40°C +70°C
Otpor:	75±3 Ω
Test zapaljivosti:	IEC 60332-1-2/VDE 0482-332-1-2 EN 60332-1-2
Gustina dima:	IEC 61034-2/VDE 0482-1034-2 EN 61034-2
Test na korozivnost sagorelih gasova:	IEC 60754-2/VDE 0482-267-3 EN 50267-2-3

Conductor:	1,63 mm Ø electrolytic solid copper
Insulation:	7,20 Ø physical foam PE
1. Screen:	Cu-pes tape shielded (100 % coverage)
2. Screen:	Tinned copper braid (60 % coverage)
Sheath:	10,50 Ø HFFR compound- black or grey
Insulation resistance (max):	>2000 M km
Mutual capacitance (max):	53 pF/m
Velocity of propagation:	82%
Operating voltage:	1,1 kV
Test voltage:	2,5 kV
Bending radius:	15X D mm
Temperature range:	-40°C +70°C
Impedance:	75±3 Ω
Flame test:	IEC 60332-1-2/VDE 0482-332-1-2 EN 60332-1-2
Smoke density:	IEC 61034-2/VDE 0482-1034-2 EN 61034-2
Test on corrosiveness of combustion gases:	IEC 60754-2/VDE 0482-267-3 EN 50267-2-3



Slabljenje 20°C / Attenuation 20°C		
5 Mhz :	1	dB/100 m
50 Mhz :	2.7	dB/100 m
100 Mhz :	4.4	dB/100 m
200 Mhz :	6.3	dB/100 m
470 Mhz :	8.8	dB/100 m
860 Mhz :	13.2	dB/100 m
1000 Mhz :	14.3	dB/100 m
1350 Mhz :	17.1	dB/100 m
1750 Mhz :	19.5	dB/100 m
2150 Mhz :	21.6	dB/100 m
2400 Mhz :	23.4	dB/100 m

RG-59/U-4 Cu/CuSn-HFFR

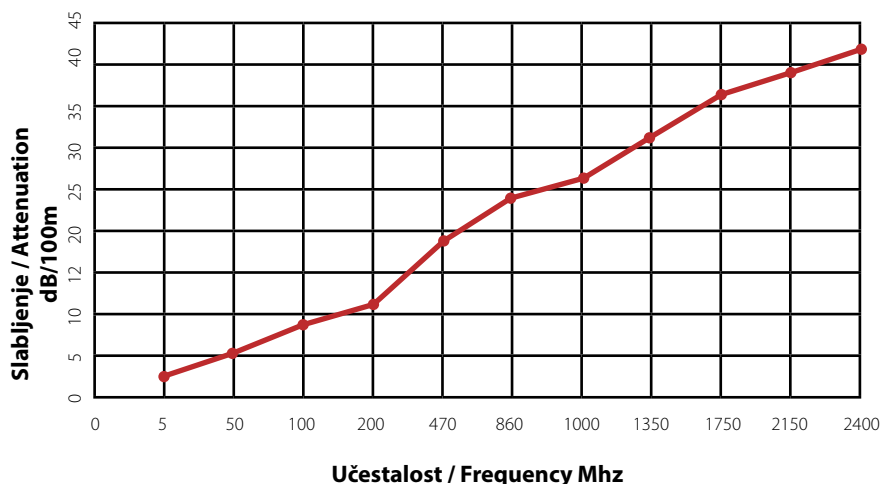


Primena: Koristi se kao priključni kabl u KDS-CCTV sistemima u zatvorenom prostoru i satelitskim sistemima za koje se traži nisko slabljenje. Ovi kablovi se zbog svojih vatrootpornih svojstava i svoje strukture koriste na prometnim mestima (tržnim centrima, hotelima itd.), gde zdravlje ljudi ne sme biti ugroženo dimom i korozivnih gasova koji proističu od požara.

Application: It is used as a connection cable at indoor catv-cctv systems and satellite systems for which low attenuation is demanded. These cables with flame retardant characteristics due to their structures are used at crowded places (shopping malls, hotels etc.), where human health must not be endangered by smoke and corrosive gases resulting from fires.

Provodnik:	0.80 mm Ø bakar punog preseka
Izolacija:	3.70 Ø PE pena
1. Ekran:	PE folija presvučena aluminijumom (100 % pokrivenosti)
2. Ekran:	kalajisano bakarno pletivo (60 % pokrivenosti)
Plast:	6.0 Ø pvc jedinjenje- bela
Otpor izolacije (MAX):	>2000 MΩkm
Radni kapacitet (MAX):	53 pF/m
Brzina širenja:	82 %
Radni napon:	1.1 kV
Ispitni naponski nivo:	2.5 kV
Radius savijanja:	15x D mm
Temperaturni opseg:	-40°C +70°C
Otpor:	75±3Ω
Test zapaljivosti:	IEC 60332-1-2/VDE 0482-332-1-2 EN 60332-1-2
Gustina dima:	IEC 61034-2/VDE 0482-1034-2 EN 61034-2
Test na korozivnost sagorelih gasova:	IEC 60754-2/VDE 0482-267-2-3 EN 50267-2-3

Conductor:	0.80 mm Ø electrolytic solid copper
Insulation:	3.70 Ø physical foam PE
1.Screen:	Al-pes-al tape shielded (100 % coverage)
2.Screen:	Tinned copper braid (60 % COVERAGE)
Sheath:	6.0 Ø PVC compound white
Insulation resistance (max) :	>2000 MΩkm
Mutual capacitance (max):	53 pF/m
Velocity of propagation:	82 %
Operating voltage:	1.1 kV
Test voltage:	2.5 kV
Bending radius:	15x D mm
Temperature range:	-40°C +70°C
Impedance:	75±3Ω
Flame test:	IEC 60332-1-2/VDE 0482-332-1-2 EN 60332-1-2
Smoke density:	IEC 61034-2/VDE 0482-1034-2 EN 61034-2
Test on corrosiveness of combustion gases:	IEC 60754-2/VDE 0482-267-2-3 EN 50267-2-3



Slabljenje 20°C / Attenuation 20°C		
5 Mhz :	2.5	dB/100 m
50 Mhz :	6	dB/100 m
100 Mhz :	8	dB/100 m
200 Mhz :	11.5	dB/100 m
470 Mhz :	18	dB/100 m
860 Mhz :	24.8	dB/100 m
1000 Mhz :	26.2	dB/100 m
1350 Mhz :	30.9	dB/100 m
1750 Mhz :	35.4	dB/100 m
2150 Mhz :	39.2	dB/100 m
2400 Mhz :	41.5	dB/100 m

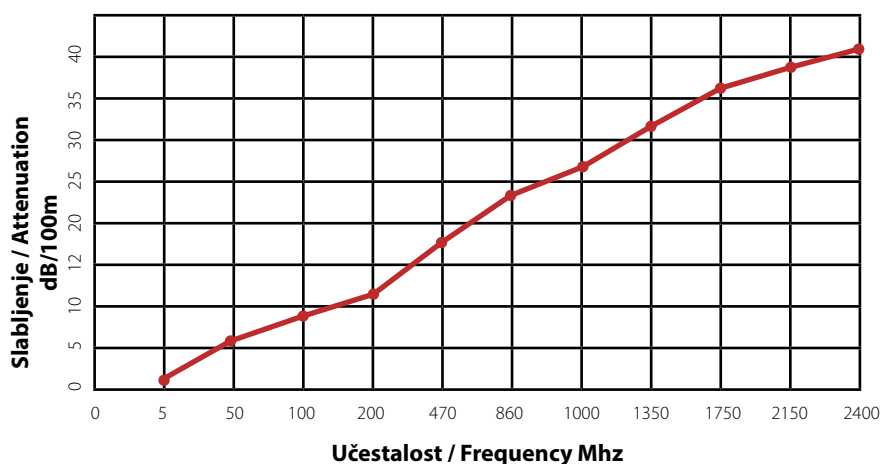
RG-59/U-6 Cu/Cu-HFFR



Primena: Koristi se kao priključni kabl za KDS-CCTV sistemima u zatvorenom prostoru i satelitskih sistema za koje se traži nisko slabljenje. Ovi kablovi se zbog svojih vatrootpornih svojstava i svoje strukture koriste na prometnim mestima (tržnim centrima, hotelima itd.), gde zdravlje ljudi ne sme biti ugroženo dimom i korozivnih gasova koji proističu od požara.

Application: It is used as a connection cable at indoor catv-cctv systems and satellite systems for which low attenuation is demanded. These cables with flame retardant characteristics due to their structures are used at crowded places (shopping malls, hotels etc.), where human health must not be endangered by smoke and corrosive gases resulting from fires.

Provodnik:	0.80 mm Ø bakar punog preseka	Conductor:	0,80 mm Ø electrolytic solid copper
Izolacija:	3.70 Ø PE pena	Insulation:	3,70 Ø physical foam PE
1. Ekran:	PE folija presvučena bakrom (100 % pokrivenosti)	1. Screen:	Al-pes tape shielded (100 % coverage)
2. Ekran:	bakarno pletivo (60 % pokrivenosti)	2. Screen:	Tinned copper braid (60 % coverage)
Plast:	6,0 Ø HFFR jedinjenje- crno ili sivo	Sheath:	6,0 Ø PVC compound- black or gray
Otpor izolacije (MAX):	>2000 MΩkm	Insulation resistance (max):	>2000 M km
Radni kapacitet (MAX):	53 pF/m	Mutual capacitance (max):	53 pF/m
Brzina širenja:	82 %	Velocity of propagation:	82 %
Radni napon:	1.1 kV	Operating voltage:	1,1 kV
Ispitni naponski nivo:	2.5 kV	Test voltage:	2,5 kV
Radijus savijanja:	15x D mm	Bending radius:	15X D mm
Temperaturni opseg:	-40°C +70°C	Temperature range:	-40°C +70°C
Impedansa:	75±3Ω	Impedance:	75±3 Ω
Test zapaljivosti:	IEC 60332-1-2/VDE 0482-332-1-2 EN 60332-1-2	Flame test:	IEC 60332-1-2/VDE 0482-332-1-2 EN 60332-1-2
Gustina dima:	IEC 61034-2/VDE 0482-1034-2 EN 61034-2	Smoke density:	IEC 61034-2/VDE 0482-1034-2 EN 61034-2
Test na korozivnost sagorelih gasova:	IEC 60754-2/VDE 0482-267-2-3 EN 50267-2-3	Test on corrosiveness of combustion gases:	IEC 60754-2/VDE 0482-267-3 EN 50267-2-3



Slabljenje 20°C / Attenuation 20°C

5 Mhz :	2.3	dB/100 m
50 Mhz :	5.8	dB/100 m
100 Mhz :	7.9	dB/100 m
200 Mhz :	11.3	dB/100 m
470 Mhz :	17.8	dB/100 m
860 Mhz :	24.5	dB/100 m
1000 Mhz :	26	dB/100 m
1350 Mhz :	30.7	dB/100 m
1750 Mhz :	35.2	dB/100 m
2150 Mhz :	39	dB/100 m
2400 Mhz :	41	dB/100 m